

REQUEST FOR PROPOSAL FOR PROFESSIONAL SERVICES CONTRACT

Department of Highways
Professional Services Procurement Bulletin 2026-11
Ballard | 1-118 | US-60

This document constitutes a Request for Proposals for a Professional Service Contract from qualified individuals and organizations to furnish those services as described herein for the Commonwealth of Kentucky, Department of Highways.

I. PROJECT DESCRIPTION

County - Ballard
Route - US-60
Item No. - 1-118.00
Project Description - Design for improvements to US-60 from Humphrey Creek Bridge to 0.4 mi West of Hester Sullivan Lane.

II. PROJECT INFORMATION

Project Manager - Austin Hart, P.E.
User Division - Highway Design
Approximate Fee - \$750,000 Preliminary Engineering & Environmental Services (Lump Sum)
Project Funding - NH (State or Federal Funds)
Project Length - Approximately 2.675 miles

III. PURPOSE AND NEED

The purpose of the project is to provide a safe, reliable and cost-effective solution that addresses the mobility needs of the US-60 corridor from LaCenter to Kevil. US-60 provides several types of connections between Wickliffe and Paducah that include several rural towns, but also serves as a vital route (National Truck Network) for commerce with forecasts of over 6,000 vehicles per day and 12% trucks. Disbursement of crashes indicate a need for passing opportunities along the corridor. Even though US-60 reconstruction has included 4 lanes, a depressed median and wide shoulders, 3 lane typicals such as Two-Way Left-Turn Lanes and 2+1 corridors have shown to reduce travel time, delays and address aggressive behavior when following slow vehicles.

IV. SCOPE OF WORK

The selected Consultant will be required to provide Preliminary Engineering and Environmental Services. Preliminary Engineering includes updated surveying, line and grade plans, traffic engineering analysis in accordance with Design Memo 03-11. Conduct stage 1 screening and stage 2 analysis in accordance with the KYTC Intersection Control Evaluation (ICE) Guidance. Preparation of engineering studies including safety analysis, identification of appropriate typical

sections, identifying any utility impacts and provide utility coordination, performing preliminary drainage design, developing dependable cost estimates, calculating right of way areas, and conducting and preparing documents for public and local elected officials meetings. The Consultant is expected to look at an on-alignment alternative as discussed from the US-60/KY-286 planning study as detailed below in Section VI. Available Studies.

Due to larger, potentially expensive and time-consuming pipeline entities within the project limits, Gas and Petroleum Pipeline coordination will be handled by the consultant. KYTC will coordinate all other utilities.

This project may be advanced to Final Design upon the completion of Preliminary Engineering with a Contract Modification. The selected Consultant will then be required to provide engineering services to perform Final Roadway and Structural Design, including the preparation of any design studies, drainage design, right-of-way plans, construction plans, traffic control plans, and cost estimates as well as any other services that KYTC chooses not to perform with in-house forces.

V. SPECIAL INSTRUCTIONS

The Department may retain any of the advertised services to be performed by in-house state forces.

Instructions for Response to Announcement can be found at:

<https://transportation.ky.gov/ProfessionalServices/Pages/Respond-to-an-Announcement.aspx>

Consultants are required to follow the [Commonwealth Office of Technology's Artificial Intelligence \(AI\) policy](#) and affirmatively disclose any use of AI or Machine Learning undertaken as part of any awarded contract.

VI. AVAILABLE STUDIES

[Programming Study – Ballard/McCracken | US-60/KY-286](#)

VII. METHOD OF DESIGN

The selected Consultant shall utilize the most recent CADD Standards for Highway Plans Policy in the development of the highway plans. Refer to the 2022 CADD Standards for ORD V4.4 Project Development Memo for information pertaining to the latest CADD Standards and plan submittal.

VIII. ENVIRONMENTAL SERVICES

Any necessary Environmental Services are expected to be provided by the Consultant. Based on preliminary discussion with the project team and all currently available environmental information for the proposed project location, we anticipate the required environmental document to be no higher than an EA. The final environmental document may be elevated (or reduced) to a different level of environmental documentation if environmental investigation leads to an alternative conclusion or changes in ROW occur. Prequalification of various Environmental Services are required to be identified in the Consultant's Response to Announcement.

IX. PHOTOGRAMMETRIC SERVICES

The Consultant will provide mapping and will furnish manuscripts in ORD format. Statewide Elevation data and Aerial photography can be found at the following link [KyFromAbove - Kentucky's Aerial Photography & Elevation Data Program](#). The selected Consultant shall supplement this information with conventional surveying as determined during project scoping.

X. STRUCTURE DESIGN

The selected Consultant may provide Structure Design services required for the project. The Preliminary Design contract may include preliminary structural design services to review available information that could influence the selection of the preferred alternate. When the project advances to Final Design and if the selected Consultant is retained for Final Design services, the selected Consultant shall do the necessary engineering services to submit to the KYTC an Advanced Situation Folder(s) for the appropriate structure(s). The selected Consultant may be responsible for any necessary Structure Design services. Additional Structure Design of the proposed structure(s) may be added as a Contract Modification. At any time, if the Department has the capacity to provide these services, the Department may retain the advertised structural design services. Prequalification in the area of Structure Design is required to be identified in the Consultant's Response to Announcement.

XI. GEOTECHNICAL SERVICES

Geotechnical Services are not anticipated for Preliminary Design. Geotechnical services necessary for the completion of Final Design may be added by contract modification at the appropriate time. At any time, if the Department has the capacity to provide these services, the Department may retain the advertised geotechnical services. Prequalification in the area of Geotechnical Services is not required to be identified in the Consultant's Response to Announcement.

XII. TRAFFIC ENGINEERING

The Department will provide all traffic projections and related information from the US-60/KY-286 Programming study.

The selected Consultant will provide any additional analysis of the existing and proposed operations, as needed. Traffic Signal Design and Lighting Design services, if necessary for the completion of Final Design, may be added by Contract Modification at the appropriate time. At any time, if the Department has the capacity to provide these services, the Department may retain the advertised traffic services.

XIII. UTILITIES

The Department is responsible for providing available information on existing utility facility locations to support the determination of conflicts of the project design with the existing utility facilities. The Department shall cooperatively support the identification of these conflicts. The Consultant shall consider the practical feasibility of utility conflict avoidance, making the necessary adjustments when directed by the Department. Those conflicts determined as unavoidable shall be addressed by the entity charged with utility coordination, be it the

Department or Consultant.

The selected Consultant shall acquire adequate information regarding existing utility features to identify existing utility facilities within the project area, document and confirm those that may be negatively impacted by the project. The selected Consultant shall bring attention any potential conflicts with existing utility facilities that may result in significant cost or time to relocate. The selected Consultant complete or contribute to a utility conflict matrix, documenting the existing utility facilities that may be impacted by the project. The Consultant shall document or confirm the following for each utility in the conflict matrix: type of utility, owner of utility, quantify the extent they may be impacted, potential impacts to project budget, potential impact to project schedule, confidence of utility location depicted, and recommendations for remedy.

The selected Consultant shall provide a project location map to the Department. The Department will send project location maps to all potential utility contacts to determine whether they may have existing utilities within these project limits. The Department will develop the utility contact list. Facility location maps received for this project will be provided to the selected Consultant.

All utilities including underground and overhead facilities within the project scope shall be field-verified by the Consultant. Sizes and types of underground and aerial utilities shall be identified on the plans for each alignment alternative in the PL&G submittal. In addition to survey horizontal location of visible utility features, the Consultant shall provide elevation of accessible manhole tie inverts and overhead low wire elevation.

The selected Consultant may be required to provide utility related services for this project, which may include utility coordination, construction inspection, or specific facility type utility design. These services have specific prequalification standards, required of the selected consultant or subconsultant.

The Department will submit a design information request ticket from KY811 during final design. The design information request will provide the selected consultant access to utility company supplied facility location data, sourced from KY811 member utility companies. There is no law requiring those utility companies to respond to a design information request with field location of the utilities within the project scope. If field locations are provided, the consultant shall perform field surveys to collect the utility company supplied field data. Horizontal location of existing utilities shall be depicted on final plans, in compliance with Department depiction standards with level of accuracy denoted, and adjusted as necessary to reflect actual field location. It is unlawful to request a normal excavation request ticket if no excavation is transpiring. If additional utility investigation is necessary, the consultant is advised to seek Department consultation. Subsurface Utility Engineering (SUE) services may be available via project contract or statewide contract.

XIV. PREQUALIFICATION REQUIREMENTS

To respond to this project the Consultant must be prequalified in the following areas by the response due date of this advertisement:

ENVIRONMENTAL & UST SERVICES

- Hazmat Corrective Action
- UST & Hazmat Preliminary Site Assessment (Phase 1)
- UST Closure Assessment

- UST Corrective Action
- *Hazmat Site Investigation (Phase 2)* (see note below)*
- *UST Site Investigation (Phase 2)* (see note below)*

ENVIRONMENTAL AQUATIC & TERRESTRIAL ECOSYSTEMS ANALYSIS

- Botany
- Fisheries
- Freshwater Macroinvertebrates
- Terrestrial Zoology
- Water Quality
- Wetlands

ENVIRONMENTAL ARCHAEOLOGY & OTHER SERVICES

- Air Quality Analysis
- Cultural-Historic Analysis
- Environmental Document Writing & Coordination
- Highway Noise Analysis
- Historic Archaeology
- Prehistoric Archaeology
- Socio-Economic Analysis
- Stream & Wetland Mitigation

ROADWAY DESIGN

- Rural Roadway Design
- Surveying
- Urban Roadway Design
- *Advanced Drainage Analysis & Design* (see note below)*
- *Photogrammetry & Related Services* (see note below)*

STRUCTURE DESIGN

- Spans Under 500 Feet

UTILITY DESIGN

- Utility Preconstruction Coordination
- *Standard Water & Sewer* (see note below)*
- *Subsurface Utility Engineering* (see note below)*

Geotechnical Services* (see note below)

- *Standard Drilling**
- *Standard Geotechnical Engineering**
- *Standard Laboratory Testing**

Traffic Engineering* (see note below)

- *Traffic Engineering**
- *Electrical Engineering Traffic Signals**
- *Electrical Engineering Roadway Lighting**

* Note – These prequalifications are not required with the initial proposal as it is uncertain to the extent practicable if they are necessary. Should these services become necessary during the delivery of the project in this or future phases, the selected Consultant team must obtain the required qualifications before providing those services or bring on a prequalified subconsultant at that time.

XV. PROCUREMENT SCHEDULE

Dates other than Response Date are tentative and provided for information only.

- Advertisement Date: May 12, 2026
- Response Date: June 3, 2026 by 4:30 PM ET (Frankfort Time)
- First Selection Meeting: June 8, 2026
- Final Selection: June 24, 2026
- Pre-Design Conference: July 1, 2026
- Consultant Fee Proposal: July 10, 2026
- Contract Negotiations: July 22, 2026
- Notice to Proceed: August 12, 2026

XVI. PROJECT SCHEDULE

- Alternative Review November 2026
- Public Involvement Meeting February 2027
- Preliminary Line and Grade April 2027

XVII. EVALUATION FACTORS

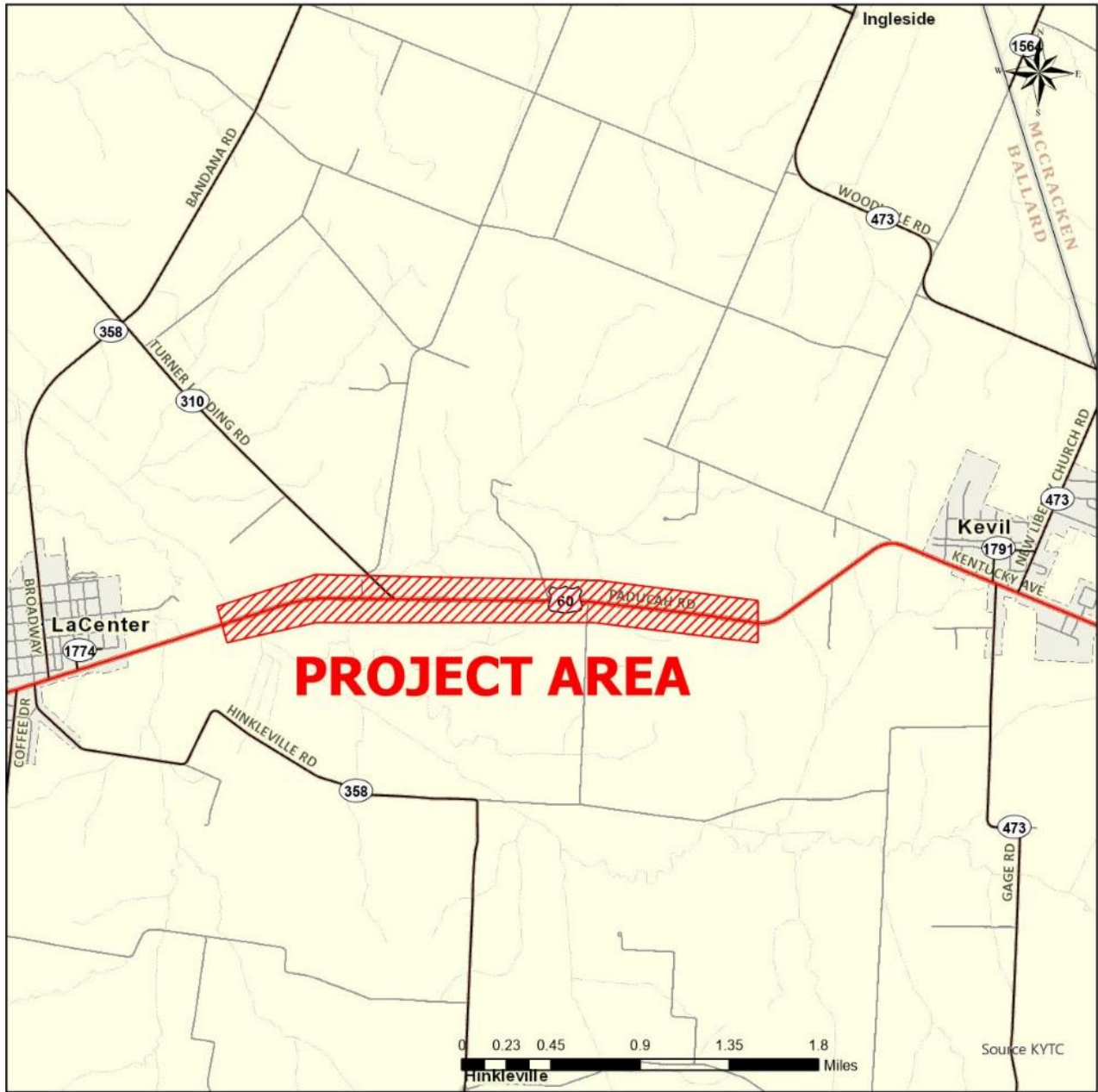
Consultants will be evaluated by the selection committee based on the following weighted factors:

1. Project approach and proposed procedures to accomplish the services for the project. (20 Points)
2. Relative experience of consultant personnel assigned to project team with highway project for KYTC and/or federal, local or other state governmental agencies. (15 Points)
3. Past record of performance on projects similar in type and complexity. (15 Points)
4. Capacity to comply with project schedule. (10 Points)
5. The Consultant demonstrates a comprehensive understanding of safety strategies and the ability to generate meaningful ideas that can measurably enhance the safety of the completed project. This includes both the immediate effectiveness and the long-term safety impacts of the finished facility. (10 Points)
6. Knowledge of the locality and familiarity of the general geographic area. (2 Points)

XVIII. SELECTION COMMITTEE MEMBERS

1. Austin Hart, P.E., User Division
2. Amanda Desmond, P.E., User Division
3. Adam Ulrich, P.E., Secretary's Pool
4. Min Jiang, P.E., Secretary's Pool
5. Marcelyn Mathews, P.E., Governor's Pool

XIX. AREA MAP



Preconstruction Status for Item #: 1-118.00

Description:
Improve US-60 from Humphrey Creek bridge to 0.4 mi west of Hester Sullivan Lane. (02CCR) (2020CCR) (2022CCR) (2024CCR)

Location List:
Ballard County US60 From MP 11.815 to MP 14.49

County 0 From MP 0 to MP 0.

Bridges:
004B00011N, 004E00012N, 004D00058N

Total Length:
2.675

Project Status:
Active

